



K.P.C. PUBLIC SCHOOL, KHARGHAR
ASSESSMENT V (2023 – 24)

GRADE: I
SUBJECT : COMPUTERS.

MARKS – 25
TIME – 1 HR.

NAME : _____

Q1. Fill in the blanks . Choose words from the brackets -.

(5)

- 1) We have _____ (five / two) enter keys on a keyboard.
- 2) We use _____(spacebar / backspace) key to put in space between letters and words.
- 3) The _____ (longest / number) key is used to type your date of birth.
- 4) The _____ (speakers / printers) play music or other sounds on the computer.
- 5) A _____ (mouse / cord) is the part of the computer that we use for clicking.

Q2. Tick the **correct answers from the following :-**

(5)

1) Which of the following is a wireless mouse?



2) Which of the following is the longest key on the keyboard?



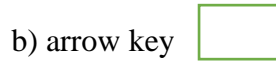
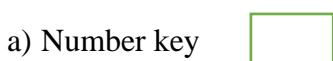
3) Which of the following devices is required to listen to music ?



4) Which of the following is used to type on a computer?



5) Which key is used to type your NAME ?



Q3. Write True or False :-


(5)

- 1) The mouse should always be kept on the keyboard - _____ .
- 2) The number keys have the numbers 0 to 9 on them - _____
- 3) We use printer to take a printout on paper - _____
- 4) The alphabet keys has the letter A to Z - _____

5) The keyboard has buttons called scroll wheel - _____

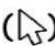
Q4. Match the following :-

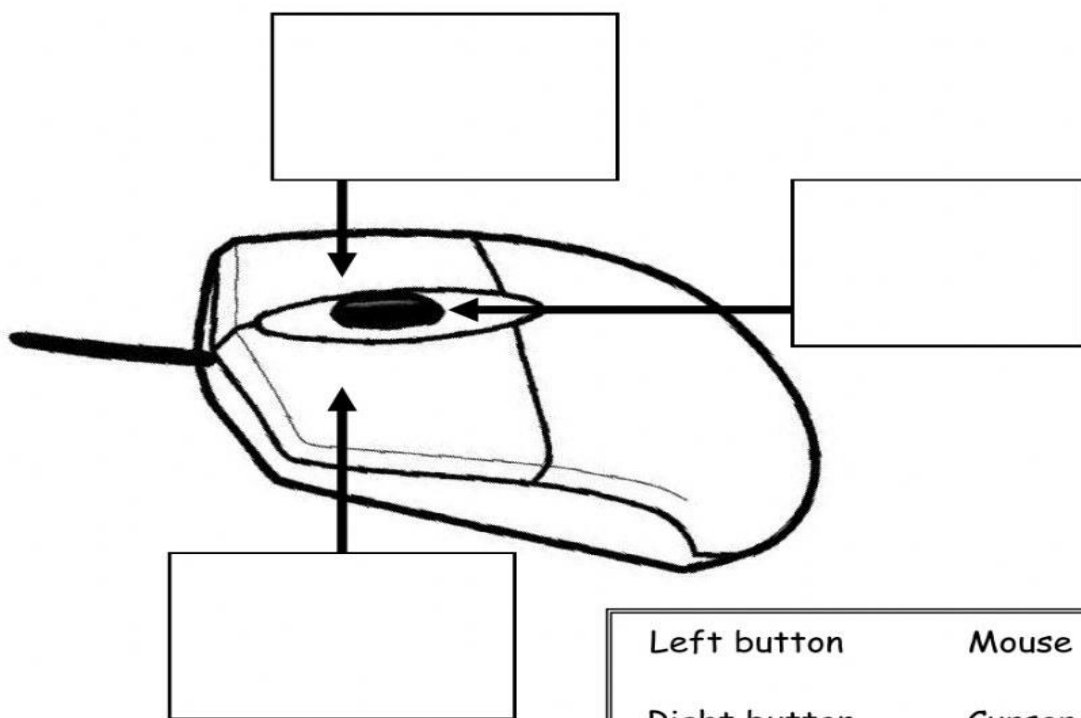
(5)

Sr.	A	Answers	B
1	Clicking		a) 
2	CAPs lock key		b) Play music or other sounds
3	Enter key		c) Pressing a mouse button
4	Printer		d) Capital letters
5	Speakers		e) Prints letters and pictures on paper

Q5. Label the parts of mouse :-

(5)

A is a pointing device. We use the mouse to move the () on the screen.



- | | |
|--------------|--------|
| Left button | Mouse |
| Right button | Cursor |
| Scroll wheel | |